

ADAP Advisory Entrepreneur's Clinic

September 2022

We are starting something exciting here at ADAP: "ADAP Advisory Entrepreneur's Clinic". A chance to meet virtually with incredible entrepreneurs and support them as they continue to make a positive impact on extreme poverty through their business ventures.

In various recent conversations with entrepreneurs across our portfolio, we have discussed one of the major casualties of Covid-19 is the loss of opportunities for social entrepreneurs to easily interact with others in the space. Travel restrictions and other pressures that have come about because of the pandemic have led to entrepreneurs missing out on chances to share ideas and brainstorm through solutions. Perhaps most significantly, not getting so many 'random' or 'casual' comments from smart collaborators who can bring much needed fresh perspectives has made it hard to address challenges they're experiencing.

We want to explore more "socialization of ideas" with the first of what we hope will be many ADAP Advisory Entrepreneur's Clinic: A semi-structured 45-minute zoom session, with the goal of leaving entrepreneurs feeling encouraged, positive and with fresh ideas and perspectives to reflect on as they embark on the next chapter of their company's journey.

First up is The Pathology Network with Dr. Joshua Kibera. We hope you'll join us on Wednesday September 21st at 9am PT.

Cheers,

ADAP

Congratulations to The Pathology Network and [Dr. Kibera](#) for placing among the winners of the Start-Up Pitch Competition at this year's [BIO Africa Convention!](#) The BIO Africa Convention is Africa's biggest BioTech Event!



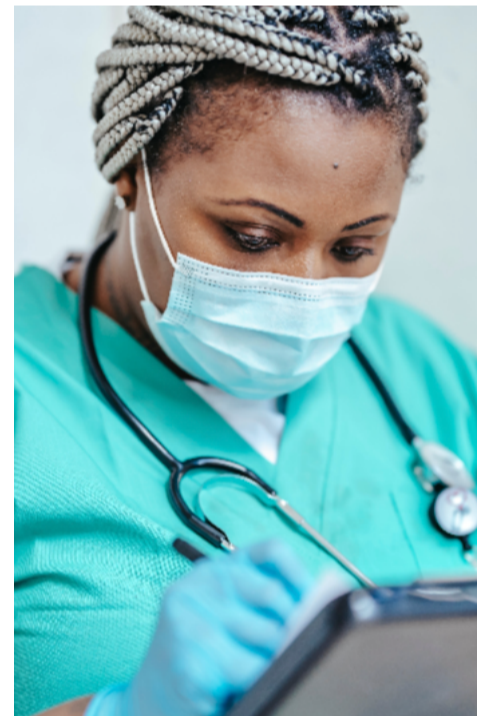
[Dr. Joshua Kibera](#), anatomical pathologist, achieved a Masters of Medicine in Anatomic Pathology at the Aga Khan University, Nairobi, as well as a Bachelor of Medicine, Surgery at Makerere University, Africa. "While running a solo pathology practice in a Meru, a rural town in Kenya, (Dr. Kibera) postulated that a cloud-based platform connecting hospitals to pathology labs and pathologists could potentially solve Africa's pathology human resource problem."



[-pathologynetwork.africa](#)



[The Pathology Network](#), a healthtech company based in Kenya, is a unified cloud-based platform connecting hospitals to pathology labs and pathologists. They have enabled equal access to quality diagnosis and standardized the pricing, timing and quality for all levels of the pathology diagnostic process in Africa.



12,000+ Patients Served

"We have developed a unique laboratory diagnostic service model for all kinds of hospitals and medical facilities. Patients in any of our client hospitals receive fast and affordable diagnosis from our network of pathology labs and pathologists... Our dream is that every African will be able to access the diagnostic test they need regardless of their geographical location."

[-pathologynetwork.africa](#)



You're Invited!

ADAP Advisory Entrepreneur's Clinic

Date: September 21 (Wed.)

Time: 9:00 - 9:45AM Pacific Time

Place: Zoom

Please [RSVP here to join us](#).

[twitter](#) [website](#) [blog](#)

Copyright © 2022 ADAP Capital LLC, All rights reserved.

Want to change how you receive these emails?
You can [update your preferences](#) or [unsubscribe from this list](#).

